



2021 LGBTQ HEALTH STATISTICS

prideinhealth
+wellbeing

43% of CALD LGBTQ people have experienced family violence ⁵



2 in 5 LGBTQI people have reported intimate partner or family violence but only 28% had reported it ¹



Sexual minorities have a higher prevalence of cardiovascular disease risk factors compared to heterosexual people ³



77.7% of LGBTQI people with severe disability or long term health conditions said they were treated unfairly in the last 12 months ¹

5.2% of LGBTQ people had attempted suicide in the last 12 months = 13x more than the general population, with trans men 34x higher and trans women 27x and non binary people at 17x ¹



22% of LGBTQI people had experienced homelessness ¹

LGBTI elders are **7x** times more likely to live alone than the general population ⁴

60% don't know where to go for help or information about housing ⁴



34x Trans Men
27x Trans Women
17x Non Binary
13x LGBTQ



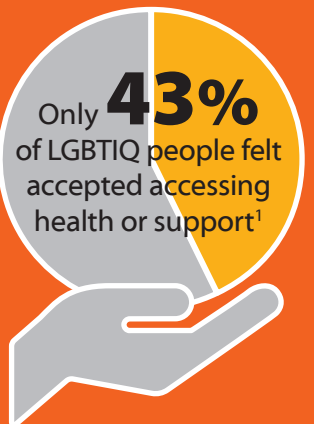
Only **46%** of trans people feel comfortable in health care settings with



22% preferring to be able to access their healthcare from a different provider ⁶



15% of health care workers felt they have treated patients/clients differently to other people due to their sexual orientation (self-reported) ²



Only **43%** of LGBTQI people felt accepted accessing health or support ¹

References: 1. Private Lives 3: Hill et al (2020). Private Lives 3: The Health and Wellbeing of LGBTQI People in Australia. La Trobe University. https://www.latrobe.edu.au/_data/assets/pdf_file/0009/1185885/private-lives-3.pdf 2. Stigma Indicators Monitoring Project, Cama, et al (2018). UNSW. <https://csr.arts.unsw.edu.au/research/projects/stigma-indicators/> 3. Caceres et al; Assessing and Addressing Cardiovascular Health in LGBTQ Adults: A Scientific Statement From the American Heart Association. Circulation. 2020; DOI: 10.1161/Cir.0000000000000914 4. Out of The Closet, Out Of Options; Older LGBTI People At Risk of Homelessness, Walktonadn York, Housing For The Aged Action Group 2020 5. Home Is Where Our Story Begins; Family Community and Belonging For Sexuality And Gender Diverse CALD People, Asquith et al, 2020, NSW LGBTIQ Domestic And Family Violence Interagency, ACON And Western Sydney Uni. 6. Trans And Gender Diverse People Health And Social Needs Assessment; A Community Survey, B. Bushby, Positive Life NSW, 2020

